

Technical Article

Rolling Mills Revamp:

Roll Upgrades for Extreme Loads



Table of Contents:

Introduction	2
Theoretical Considerations of Roll Upgrades for Extreme Loads	3
Bearings with Reduced Cross-Section	5
Case Study – Existing Solution and Problem Description	6
Case Study – Timken Roll Upgrade Solution	9
Summary and Conclusions	11
Acknowledgements	11
References	11

**Rolling Mills Revamp:
Roll Upgrades for Extreme Loads**

Introduction

Market Overview

Today's rolling mill market environment can be characterized by low investment in new equipment and higher requirements for output. The mills are getting older, but to increase productivity, their operational loads are becoming much heavier. These extreme conditions, along with old and obsolete roll designs, contribute to many of the roll neck failures that occur in 2-HI mill work rolls or 4-HI mill back-up rolls. As a consequence, the market is demanding a rolling mills revamp to mitigate roll neck breakage in the fillet ring area under severe loading conditions. The choice of bearing selection can play an important and beneficial role in establishing a successful revamp solution.

Technical Overview

Rolling mills represent an extremely demanding application for both bearings and rolls, which must perform under high operating temperatures, loads and speeds.

During the rolling process, the roll rotates and, simultaneously, the load is applied through the bearings on the semi-finished strips. One point on the roll neck supports mainly tensile stress with a maximum value σ_{\max} , while the point found diametrically opposite supports a compressive stress with a minimum value σ_{\min} . When the roll rotates 180 degrees, these two points change position and stress, and the tension progresses from σ_{\max} to $\sigma_{\min} = -\sigma_{\max}$. Over time, the material stress on these points varies many times between these two limits (one full variation per rotation), as shown on the graph in Figure 1. As a result, the area of the roll neck between the bearing and the barrel (the fillet radius area) is subjected to alternant symmetrical cyclical bending stress that fluctuates with the roll's rotation. A careful evaluation is required to determine the maximum allowed stress and manage the geometrical features of the transition between the roll neck and barrel diameters (i.e., step chamfers and fillet radii) in order to control the effect of stress concentration.

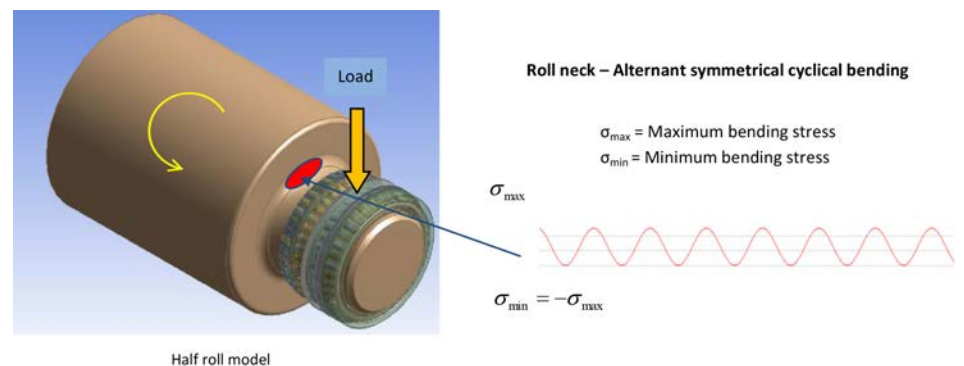


Figure 1:
Roll bending stress.

The Timken Company solution for revamping heavily loaded roll neck bearings

The Timken Company offers the following roll neck solution engineering support for revamp projects:

1. Roll design optimization by maximizing the roll neck diameter
2. Design support for a compounded roll neck fillet radius
3. Selection of bearings with reduced cross section (larger bore, same outer diameter*, same or smaller overall width and special features to maintain or increase bearing load rating).

*The revamp solution assumes that the same chocks will be used, which requires bearings with the same outer diameter.

Theoretical Considerations of Roll Upgrades for Extreme Loads

1. Roll Design Optimization

a. Roll neck diameter optimization

In heavily loaded rolls, which often run at slow speeds, a larger neck diameter is needed to cope with the higher bending stress. Based on this need, a conventional heavy-duty bearing size (represented by bearing A in Figure 2) may not be suitable. For these high-load applications, reduced section bearings are suggested (represented by bearing B) with the same outer diameter as the heavy-duty bearings, but with a larger bore. These reduced section bearings offer an increased neck to barrel ratio ($d/D \sim 68$ percent) and, whenever possible, a smaller bearing width that also reduces the axial distance between the screw-down load line and the barrel face. The increased roll neck outer diameter and reduced bending moment improve the performance capability of the roll neck under extreme loads.

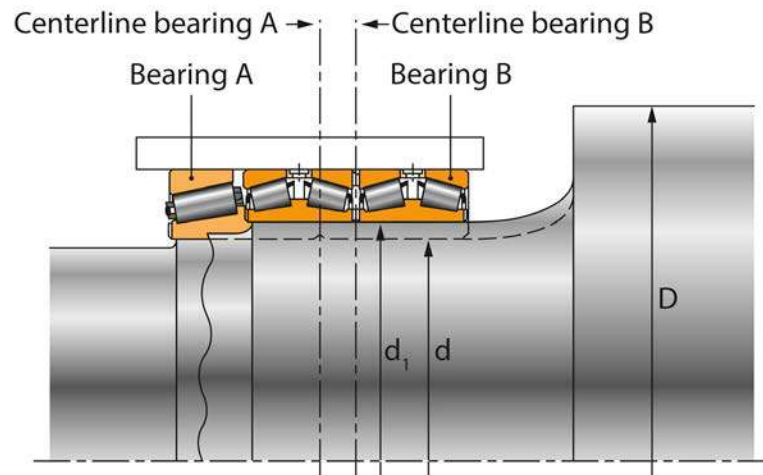


Figure 2:
Roll diameter optimization.

b. *Replace existing fillet radius with a compound fillet radius*

Traditional roll neck designs often use a simple radius in the fillet area. Timken's long experience in the steel-making industry indicates that this solution may be inappropriate for heavily loaded mills, and recommends replacing the simple radius with a compound fillet radius. Compound – or two-radii – fillets are recommended because they offer favorable stress distribution across the fillet radius. Figure 3 shows the development of the compound radii fillet from two predetermined fillet length and height dimensions r_a and r_b , respectively, with the purpose of reducing roll neck maximum stress. The length and height of the fillet radii r_c and r_d can be determined using the following formulas:

$$r_c = r_a + \frac{(r_a - r_b)^2}{2(r_b - r_d)} \qquad r_d = \frac{4r_b - r_a}{3}$$

r_a = Fillet length (r_a is less than $2.5 r_b$ for practical purposes)

r_b = Fillet height

r_c = Major radius of compound fillet

r_d = Minor radius of compound fillet

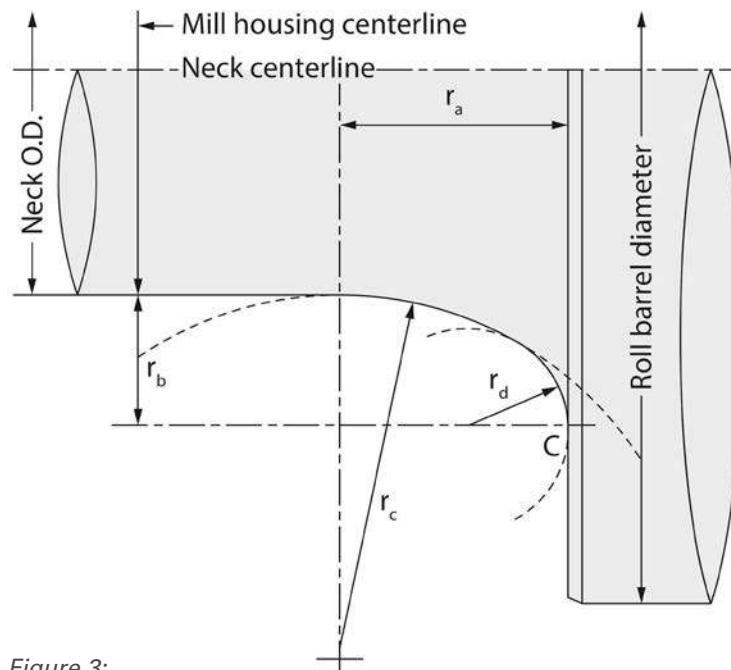


Figure 3:
Compound fillet radius.

Bearings with Reduced Cross Section

Timken engineers use sophisticated, application-focused computer programs to model applications and operating environments, producing specially designed bearings that yield longer life. To maximize bearing performance in tough operating conditions, Timken has developed the DuraSpexx® Power Rating Series of bearings. DuraSpexx bearings feature a modified design that offers enhancements to improve bearing life in demanding applications with harsh environments. DuraSpexx bearings are ideal for heavy-load industrial applications such as rolling mills and gear drives. The enhanced features and reduction in cross-section of these bearings result in higher bearing ratings. DuraSpexx leverages Timken technical design knowledge to achieve a 23 percent bearing dynamic rating increase, resulting in fatigue life increase versus the standard Timken bearing, as shown in Figure 4.

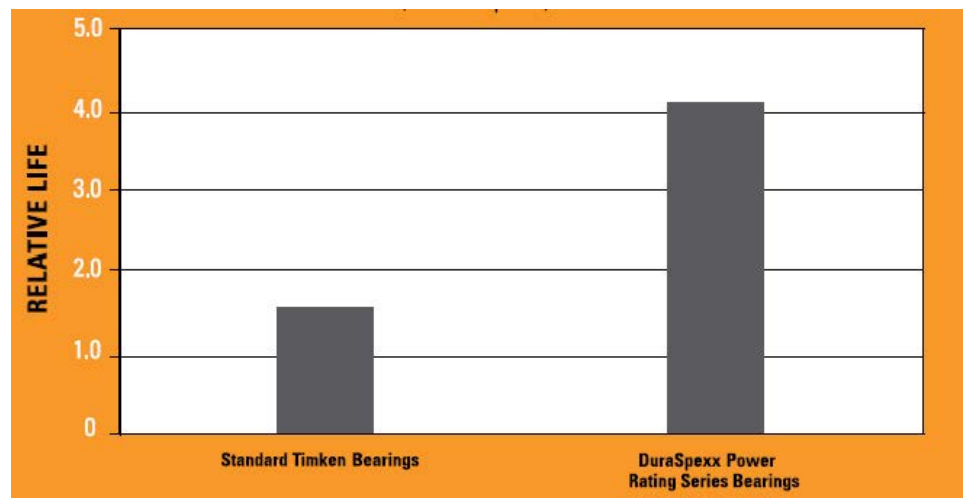


Figure 4:
Comparative life results for the DuraSpexx® Power Rating Series vs. standard Timken bearings within the same envelope.

DuraSpexx Design Attributes

- **Enhanced steel materials** with improved cleanliness and modified inclusion shape to reduce inclusion-related damage.
- **Surface finishing** options to reduce peeling and fatigue in high-temperature and thin lubricant-film environments.
- **Profiled geometry** to optimize contact stress distribution under high loads and/or misalignment.

Case Study – Existing Solution and Problem Description

This application is performed on rolls of 2-HI mills, but could be extended to the back-up rolls of 4-HI mills. Figure 5 shows the roll load and current fillet radius detail.

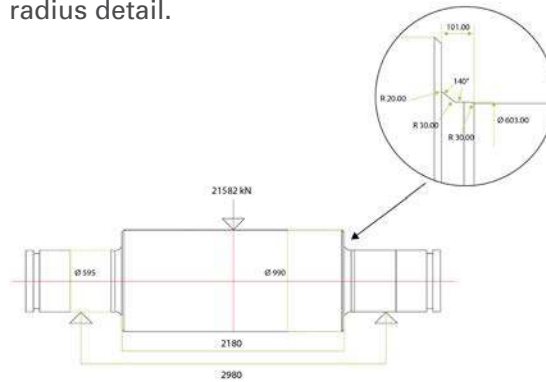


Figure 5:
Roll load and fillet radius detail.

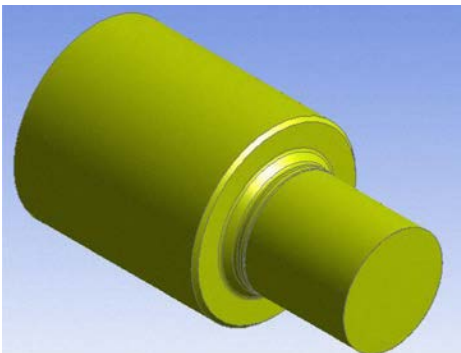


Figure 6:
Roll neck fillet design: Isometric view.

Mill design attributes

Mill type: 2-HI mill
 Roll barrel diameter: 990 mm
 Barrel width: 2180 mm
 Roll neck diameter: 595 mm
 Roll neck to barrel ratio: 60 percent
 Screw-down distance: 2980 mm
 Roll body material: Steel
 Young's modulus: 210000 MPa
 Poisson's ratio: 0.3
 Tensile yield strength: 250 MPa
 Tensile ultimate strength: 460 MPa
 The isometric view of the roll is shown in Figure 6.

Operating conditions

Max. rolling load: 2200 tons (= 21582 kN)
 Max. rolling speed: 220 m/min at pass line

Timken bearing

Figure 7 shows an expanded view of the four-row tapered bearing made up of two double inner rings, four single outer rings, one inner-ring spacer and three outer-ring spacers.

Bearing: Four-row tapered roller bearing M280049DW-M280010

Envelope: 595.312 x 844.550 x 615.950 (I.D. x O.D. x width in mm)
 Timken rating: C90(4) = 4400 kN

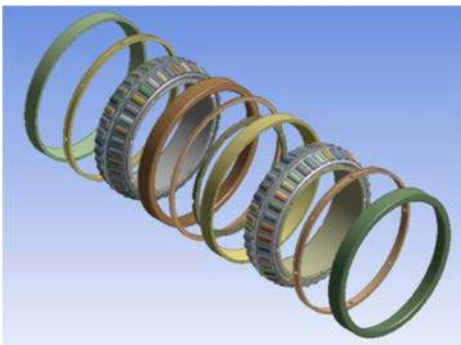


Figure 7:
Expanded view of the four-row tapered bearing.

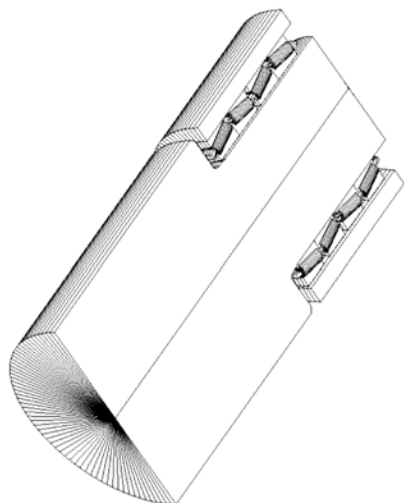


Figure 8:
Computer model: Isometric view.

Computer model

Figure 8 shows the isometric view of the computer model. The computer-modeled application is shown in Figure 9.

The adjusted bearing fatigue life L10a of the maximum loaded row, presented in Figure 10, is 2800 hours.

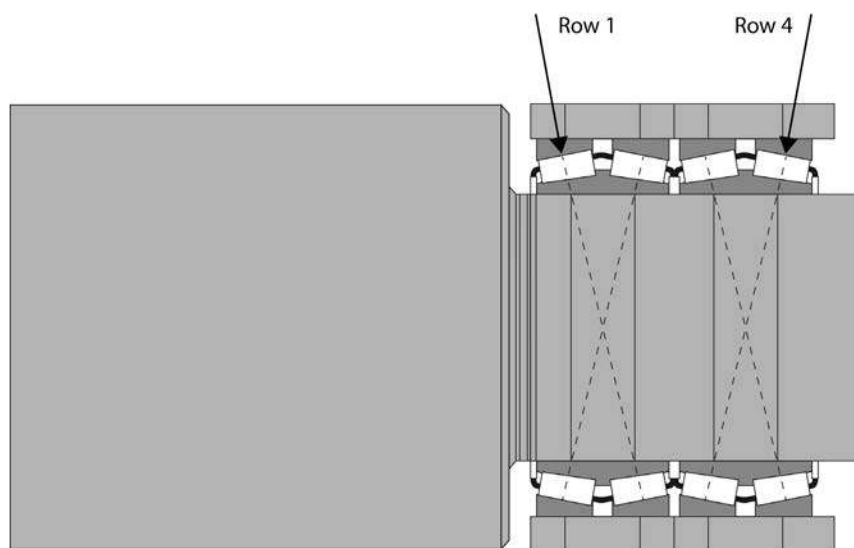


Figure 9:
Computer model.

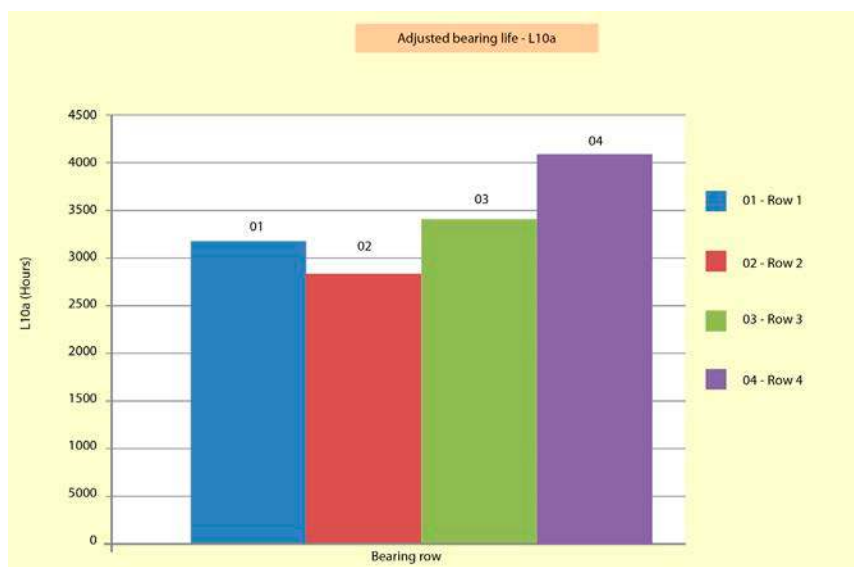


Figure 10:
Adjusted bearing life.

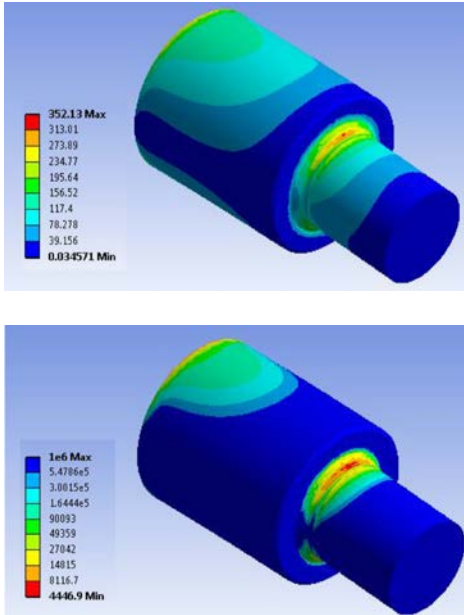


Figure 11:
Roll neck assessment before upgrade:
Maximum stress and fatigue life.

Since the bearing cups are stationary in the chocks, only one part of the cup carries the rolling load at any given time. This part is called the 'load zone'. Roll neck bearing cups are marked on their back and front faces to show four quadrants. The cup face markings enable the user to keep a record of which quadrants have been used in the load zone. A good practice is to mount the bearing with quadrant number 1 of each cup in the load zone, then during subsequent inspections rotate to each of the others, in sequence, until the procedure repeats again with number 1. The rotation of the cups at every inspection will extend the useful life of the bearing by incrementally distributing the load over the entire cup raceway.

The roll maximum stress on the fillet area of 352 N/mm² and the roll fatigue life of 4400 hours are presented in Figure 11.

Problem description – roll neck breakage

The roll was broken at its fillet radius area, as shown in Figure 12. The customer requested Timken Support for solutions to increase roll neck strength and keep the new bearing fatigue life within acceptable limits. There were no reported issues with the existing bearing selection.



Figure 12:
Roll neck breakage.

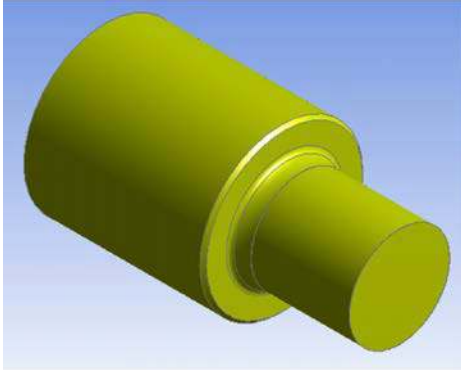


Figure 14:
Optimized roll neck fillet.

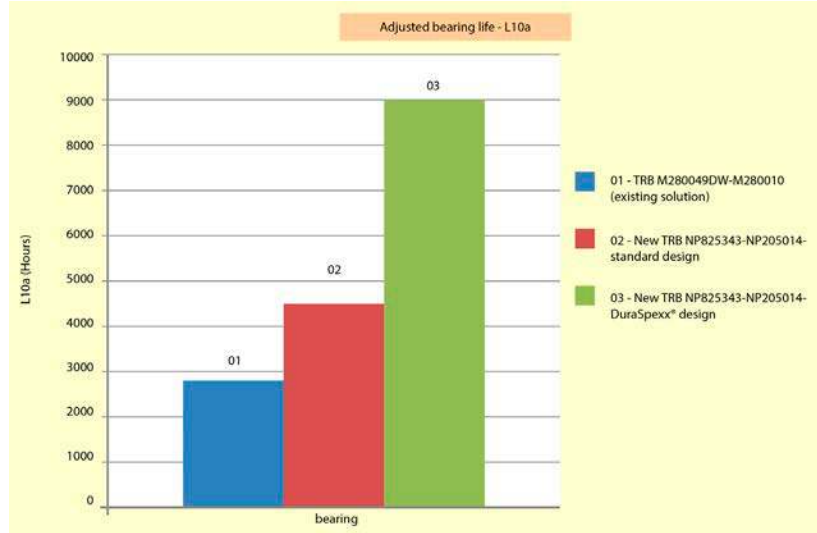
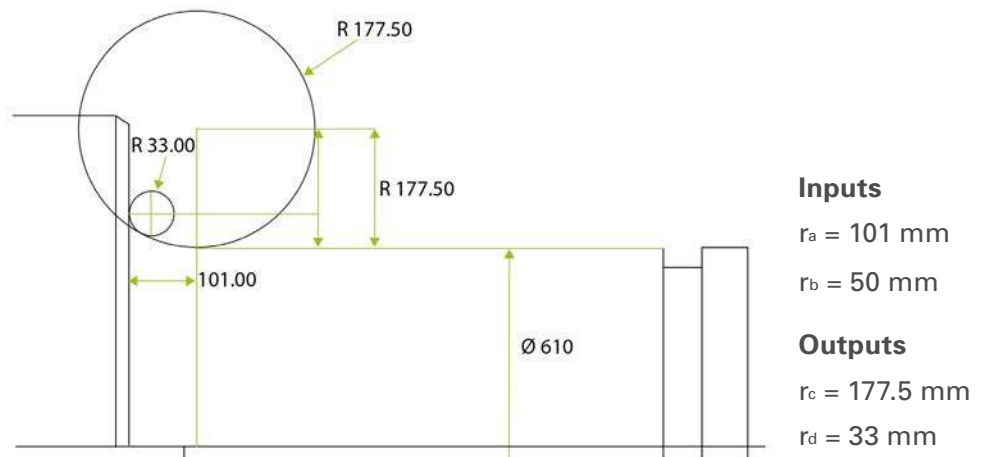
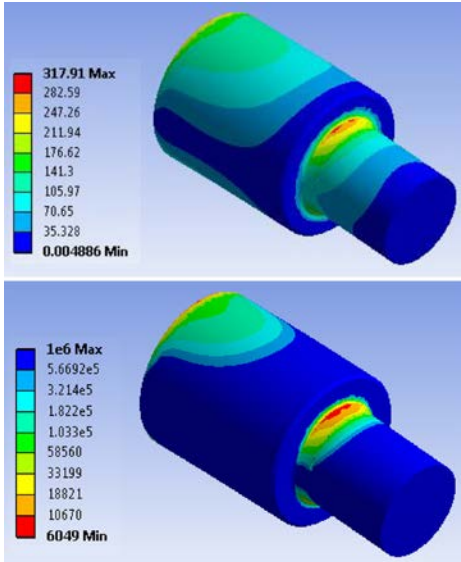


Figure 15:
Adjusted bearing life L10 for existing solution vs. standard and DuraSpexx bearing designs.

2. Replace Existing Fillet Radius with Compound Fillet Radius

The adjusted bearing fatigue life L10a, shown in Figure 15, is 4500 hours for the standard Timken bearing and 9000 hours for the DuraSpexx® bearing design.





The maximum roll stress on the fillet area of 318 N/mm² and the roll fatigue life of 6000 hours are shown in Figure 16.

Results of roll upgrade

1. Decreased the maximum roll stress from 352 N/mm² to 318 N/mm², a decrease of 9.6 percent.
2. Increased the roll fatigue life from 4400 hours to 6000 hours, an increase of 36 percent.
3. Increased bearing fatigue life L10a of the standard Timken bearing from 2800 hours to 4500 hours, an increase of 60 percent.
4. Increased bearing fatigue life L10a of the new DuraSpexx bearing from 2800 hours to 9000 hours, an increase of 120 percent.

Figure 16:
Roll neck assessment after upgrade:
Maximum stress and fatigue life.

Summary and Conclusions

The market is now requesting roll mill revamps because of the frequent failures caused by roll neck breakage in the fillet ring area. The Timken Company has extensive expertise in this area, and offers both engineering support for roll design optimization and bearings with a reduced cross-section. These measures improve roll performance by decreasing the maximum roll stress and increasing roll and bearing fatigue life.

Acknowledgements

The authors would like to thank The Timken Company for permission to publish this study.

References

1. Harris, T. and Kotzalas, M. (2007), "Rolling Bearing Analysis –Advanced Concepts of Bearing Technology"
2. Association of Iron and Steel Engineers (1985), "The Making, Shaping and Treating of Steel," 10th Edition
3. The Metals Society (1978), "Flat Rolling: A Comparison of Rolling Mill Types"
4. ISO 281 (2007), Rolling Bearings – Dynamic Load Ratings and Rating Life
5. Timken Engineering Manual – Metals Industry Edition
6. Timken Metals Product Catalog

For more information visit: www.timken.com or contact your local Timken sales representative.

The Timken team applies their know-how to improve the reliability and performance of machinery in diverse markets worldwide. The company designs, makes and markets bearings, gear drives, automated lubrication systems, belts, brakes, clutches, chain, couplings, linear motion products and related industrial motion rebuild and repair services.

Stronger. By Design.

www.timken.com